

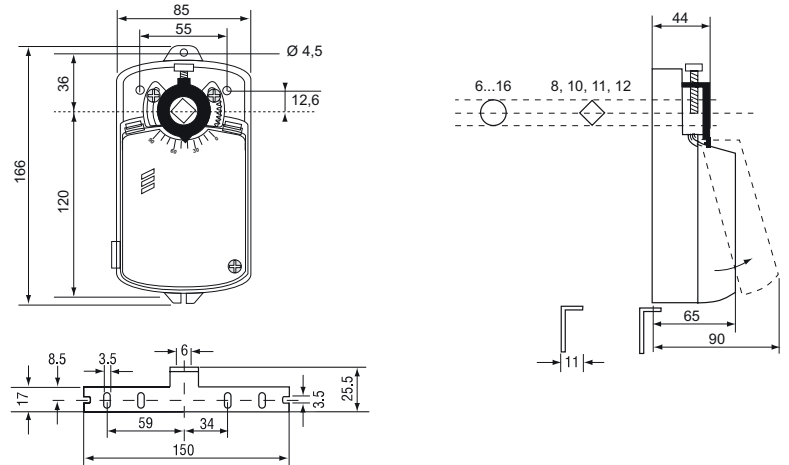
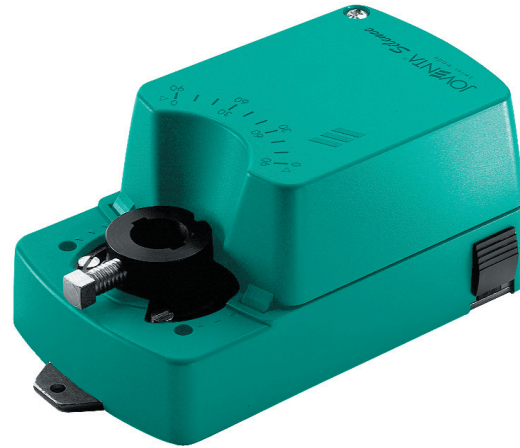
**DAN1.N / DAN2.N**  
ON/OFF and Floating Actuators

**Application**

The electric actuators have been specially developed for use with small air dampers in ventilation and air conditioning systems. Thanks to their very small size and clever construction they are also ideal for applications where space is limited. A key feature of the design is the stem adapter which also incorporates angle-of-rotation limiting and position indication.

**Features**

- ON/OFF and Floating control
- Load-independent running time
- Up to 5 actuators in parallel operation possible
- Plug-in terminal block connection
- Simple direct-mounting with universal adapter for fitting to 6...16 mm Ø round axis or with Z01DN adapter kit for 8,10,11 and 12 mm square shaft
- Selectable direction of rotation
- Limitation of rotation angle
- Manual release button
- 2 adjustable auxiliary switches (See back page for settings)
- Automatic shut-off at end position (overload switch)
- Energy saving at end positions
- Actuators available with 1 m halogen-free cable

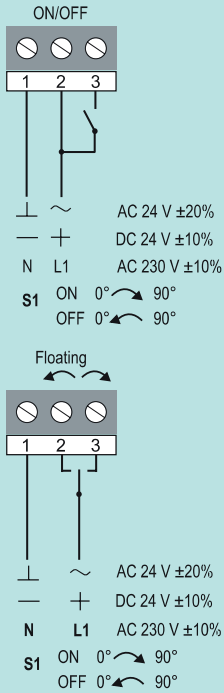


Dimensions in mm

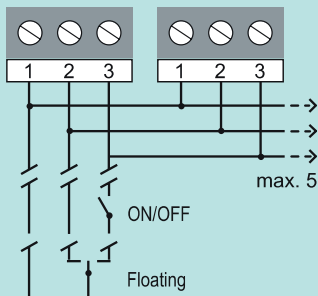
**Ordering Codes**

Codes	Descriptions
DAN1.N	AC/DC 24 V
DAN1.SN	AC/DC 24 V, with 2 auxiliary switches
DAN2.N	AC 230 V
DAN2.SN	AC 230 V, with 2 auxiliary switches

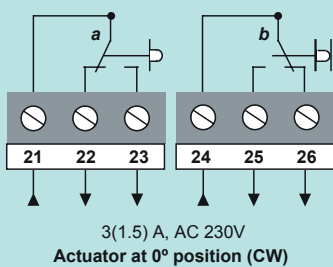
**Wiring Diagrams**



**Parallel Connections**



**Auxiliary Switches (S)**



**DAN1.N / DAN2.N**  
ON/OFF and Floating Actuators

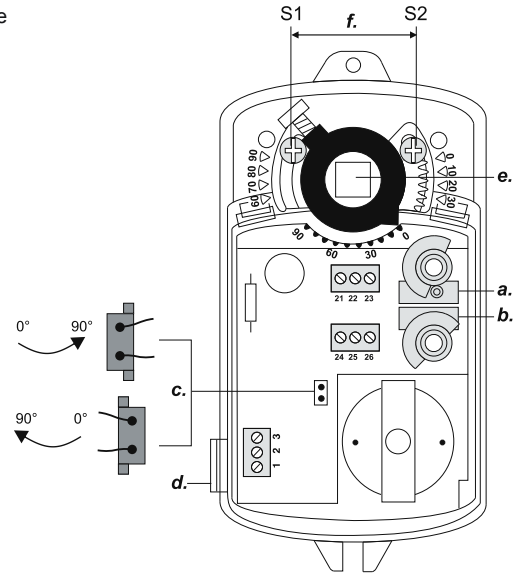
**Settings**

The direction of rotation can be changed by reversing plug **c**

Factory setting:  
Clockwise rotation.

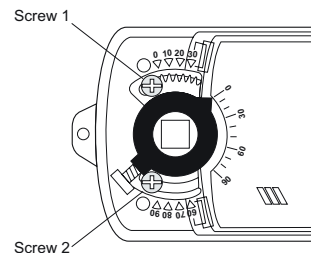
Factory setting:  
Switch **a** at 10°  
Switch **b** at 80°

The switching position can be manually changed to any required position by turning the ratchet




**Limitation of rotation angle**

The angle of rotation/working range of 90° can be reduced by up to 30° from each end position by means of screw 1 and 2.



**DAN1.N / DAN2.N**  
**ON/OFF and Floating Actuators**
**Technical Specifications**

Actuator	DAN1.N	DAN1.SN	DAN2.N	DAN2.SN
Torque	4 Nm			
Damper area*	0.8 m <sup>2</sup>			
Running Time	35 s			
Supply Voltage	AC/DC 24 V		AC 230 V	
Frequency	50-60 Hz			
Power Consumption				
- Running	2.5 W		4.0 W	
- At end position	0.75 W		3.0 W	
Dimensioning	4.1 VA / 3.4 A @ 2 ms		5.0 VA / 0.5 A @ 2 ms	
Control Signal	ON/OFF or Floating			
Position Signal	Mechanical			
Angle of rotation				
- Working range	90° (93°mech.)			
- Limitation	0°...30° and 90°...60°			
Service life time	60,000 rotations			
Auxiliary Switches	None	3(1.5) A, AC 230 V	None	3(1.5) A, AC 230 V
- S1 setting range	None	5°...85° < adjustable	None	5°...85° < adjustable
Noise level	40 dB (A)			
Protection Class	II			
Degree of Protection	IP 42			
Cable aperture connection	M16 x 1.5			
Mode of Action	Type 1			
Ambient conditions				
- Operating temperature	-20...+50 °C / IEC 721-3-3			
- Storage temperature	-30...+60°C / IEC 721-3-2			
- Humidity	5...95% r.F. no condensed			
Weight	0.9 Kg			
Service	Maintenance-free			
 Conformity	<b>EMC Directive 2004/108/EC</b> <b>Low Voltage Directive 2006/95/EC</b>			

\*Caution: Please note damper manufacturer's information concerning the open/close torque.